

NOTE

Notes on the Distribution of *Anopheles (Anopheles) sinensis* Wiedemann (Diptera: Culicidae) in China and the Status of Some *Anopheles Hyrcanus* Group Type Specimens from China

Anopheles (Anopheles) sinensis Wiedemann is an important vector of malarial parasites in China and Korea (Liu et al. 1990, Wilkerson et al. 2003). It has a wide distribution in Asia, including Afghanistan, Cambodia, China (north and south parts, Hong Kong), Malaysia, India (Assam), Indonesia, Japan (Hokkaido, Honshu, Shikoku, Kyushu, Tsushima, Ryukyu Islands), Korea (Korean Peninsula, Cheju Do), Myanmar, Singapore, Taiwan, Thailand, Vietnam (Tanaka et al. 1979, Harrison and Scanlon 1975), and Nepal (Darsie and Pradhan 1990). Several sources were used to document the distribution record of *An. sinensis* in China. First, LMR examined about 400 pinned mosquito specimens in the collection of the Institute of Zoology Museum, Chinese Academy of Sciences, Beijing. These specimens are presently housed in more than 50 boxes (most of which are 29 × 21 × 5.5 cm in size). Based on these collections, about 27 localities (counties or towns) in 8 provinces and 1 city (Beijing) were confirmed for *An. sinensis* (Table 1). Secondly, more than a hundred specimens located in the National Museum of Natural History, Smithsonian Institution, and on loan from The Natural History Museum, London, identified as *An. sinensis* were examined and confirmed from three provinces: Guangdong (Guangzhou: Daling), Yunnan (Kaiyuan, Kunming); Jiangsu (Nanjing, Wuxi). Thirdly, specimens of *An. sinensis* deposited in the Department of Etiologic Biology, Second Military Medical University, Shanghai, China, which includes collections from Hainan (Sanya and Lingshui), Guangdong (Zhuhai) and Shanghai, were confirmed. Fourth, the Entomology Laboratory of the Jiangsu Institute of Parasitology has on-going col-

lections of *An. sinensis*, whose origin was Wuxi, Jiangsu. Lastly, Ma et al. (1998) conducted molecular analyses of Chinese mosquitoes and listed one city (Beijing) and 9 provinces (county or town in parenthesis) of China where they collected *An. sinensis*, namely, Fujian (Jianyang), Guizhou (Sinan), Hainan (Dengmai), Henan (Zhengzhou), Jiangsu (Wujing, Wuxi), Liaoning (Faku, Shenyang), Shandong (Jining), Shanxi (Danfeng), Sichuan (Pixian, Pujiang), and Yunnan (Simao). The above observations reflect a very extensive geographical distribution of *An. sinensis* in mainland China, and we report that it is now known to occur in 46 locations (counties or towns) of 16 provinces and 2 cities (Beijing and Shanghai) (Fig. 1).

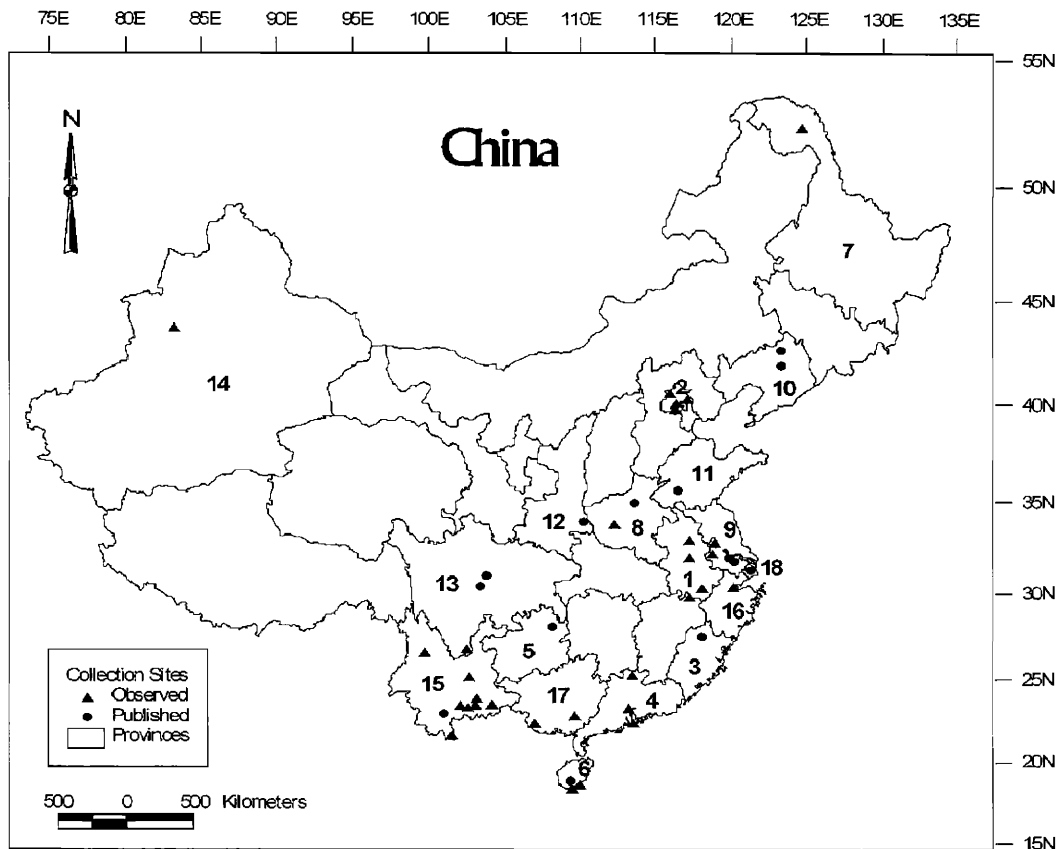
According to Yang et al. (1991: 84), the holotypes, allotypes, and paratypes of the *Anopheles (Anopheles) changfus* Ma (1981: 65), *An. (Ano.) dazhaius* Ma (1981: 65–66), *An. (Ano.) heiheensis* Ma (1981: 66–67) and *An. (Ano.) xiaokuanus* Ma (1981: 67–68) are deposited in the Institute of Zoology Museum, Chinese Academy of Science. The type localities are Sichuan (Emai) and Sichuan (unknown town) of the first two species, respectively, and Heilongjiang (Aihui) for the last two species. During a visit (LMR) to the Institute of Zoology Museum in May 2004, the insect curators, Dr. Xiaolin Chen and Mr. Jian Yao, attempted to find the above types in the museum building but could not locate them. Dr. S. F. Ma, who described those four species, was also unable to give any additional information about the location of the specimens (Xiaolin Chen, personal communication). If these specimens prove to be non-extant, neotype designations will be necessary to ensure stability in the *Anopheles Hyrcanus* Group.

Table 1. Collections of *Anopheles (Anopheles) sinensis* in the Institute of Zoology Museum, Chinese Academy of Sciences, Beijing, China.

Box No.	Mosquitoes	Location	Date
0269-14	135 ♀	Beijing: Beijing	4–28 June 1957
0269-8	12 ♀ 1 ♂	Beijing: Pinggu	23 June 1970
	12 ♀	Beijing: Daxing	12–14 August 1970
	13 ♀ 1 ♂	Beijing: Yianqing	24 June 1970
0013-5	5 ♀	Zhejiang: Hangzhou	12 July 1956
0013-6	4 ♀, 3 ♂	Zhejiang: Hangzhou	1–16 September 1956
0013-21	48 ♀, 7 ♂	Zhejiang: Hangzhou	21–30 June 1956
	9 ♀, 4 ♂	Zhejiang: Hangzhou	7–14 July 1956
0013-14	2 ♀	Zhejiang: Hangzhou	11, 15 June 1956
	1 ♀	Zhejiang: Hangzhou	22 August 1956
	2 ♀	Zhejiang: Hangzhou	4 September 1956
0013-7	1 ♀	Zhejiang: Hangzhou	8 July 1956
	1 ♂	Zhejiang: Hangzhou	2 September 1956
0013-12	1 ♀	Guangdong: Guangzhou	29 September 1957
	2 ♀	Guangdong: Guangzhou	5, 8 October 1957
0013-1	4 ♀	Guangdong: Guangzhou	24 June 1956
	2 ♀, 2 ♂	Guangdong: Guangzhou	22 June 1957
0013-10	7 ♀	Guangdong: Guangzhou	21–30 May 1957
0269-19	1 ♀	Heilongjiang: Tahe	1 August 1971
	2 ♀	Guangxi: Longrui (120 m elev.)	5 December 1986
	22 ♀	Guangxi: Xiashixiang, Pingxiang (270 m elev.)	12 December 1986
No label	4 ♀	Guangxi: Pingxiang (120–270 m elev.)	5, 11 December 1986
0212-23	9 ♀	Guangxi: Pingxiang (270 m elev.)	13 December 1986
No label	9 ♀	Henan: Funiu	16 September 1986
0269-13	3 ♀	Anhui: Fucunniufang	11 July 1985
	3 ♀	Anhui: Furen	11 July 1985
	1 ♀	Anhui: Furenfang	7 July 1985
	1 ♀	Anhui: Huangshan	24 June 1985
	2 ♀	Anhui: Shuifutian	11 July 1985
	1 ♀	Anhui: Huangshan	24 June 1985
0212-27	21 ♀	Yunnan: Luchunxian (950–1800 m elev.)	2 July 1985
No label	8 ♀	Yunnan: Luchunxian (950–1800 m elev.)	16 September 1986
0212-7	4 ♀	Yunan: Manushu, Mengla (700 m elev. 1)	20 August 1986
0212-5	5 ♀	Yunan: Honjangu, Jiangchengxian (950 m elev.)	15 September 1986
0212-2	3 ♀	Yunan: Gejiu (1800 m elev.)	3 August 1986
	1 ♀	Yunan: Jiangchengxian (950 m elev.)	31 July 1986
	3 ♀	Yunan: Wenshanzhen (1300–1350 m elev.)	16 September 1986
0212-1	2 ♀	Yunan: Luchunxian (1400 m elev.)	8 August 1986
	3 ♀	Yunan: Yuanyangxian (1600 m elev.)	6 August 1986
0212-8	3 ♀	Yunan: Mengla (850–900 m elev.)	28 August 1986
0212-4	4 ♀	Yunan: Jiangchengxian (950 m elev.)	15 August 1986
	2 ♀	Yunan: Luchunxian (1400 m elev.)	9 August 1986
0212-22	5 ♀	Xingjiang: Yili	7–17 August 1957

We are especially grateful to the following staff of the Institute of Zoology Museum, Chinese Academy of Sciences, Beijing, China: Ai-Ping Liang for his help and hospitable arrangement of the museum visit; Xiao-Lin Chen, Yao Jian, and H. Liu for their help in curating the specimens and

translating data labels of the specimens; and Ge-Xia Qiao for initially arranging the museum visit. Thanks to Ralph Harbach (Department of Entomology, The Natural History Museum, London, U.K.) for the loan of *An. sinensis* specimens, and James W. Jones and Jetsumon Prachumsri (Depart-



Province Identification: Anhui (1), Beijing (2), Fujian (3), Guandong (4), Guizhou (5), Hainan (6), Heilongjiang (7), Henan (8), Jiangsu (9), Liaoning (10), Shandong (11), Shanxi (12), Sichuan (13), Xingjiang (14), Yunnan (15), Zhejiang (16), Guangxi (17), Shanghai (18).

Fig. 1. Map of mainland China showing distribution of *Anopheles sinensis* (based on observed and published specimens).

ment of Entomology, Armed Forces Research Institute of Medical Sciences, U.S. Army) for their support. Thanks also to Tom D. Anderson for preparing the map, and Richard C. Wilkerson and Yiau-Min Huang for reviewing the manuscript. This work was performed under a Memorandum of Understanding between the Walter Reed Army Institute of Research and the Smithsonian Institution, with institutional support provided by both organizations. The opinions and assertions contained herein are those of the authors and are not to be construed as official or reflecting the views of the Department of the Army or the Department of Defense.

LITERATURE CITED

Darsie, R. F. and S. P. Pradhan. 1990. The mosquitoes of Nepal: Their identification, distribution and biology. *Mosquito Systematics* 22: 69-130.

Harrison, B. A. and J. E. Scanlon. 1975. Medical entomology studies—II. The subgenus *Anopheles* in Thailand (Diptera: Culicidae). *Contributions of the American Entomological Institute (Ann Arbor)* 12: 1-307.

Liu, C. F., H. L. Quian, Z. C. Gu, J. Y. Pan, and X. Zheng. 1990. Comparative studies on the role of *Anopheles anthropophagus* and *Anopheles sinensis* in malaria transmission in China. *Chinese Journal of Epidemiology* 11: 360-363.

Ma, S. F. 1981. Studies on the *Anopheles (A.) sinensis* group of mosquitoes in China, including four sibling species. *Sinozoology* 1: 59-74.

Ma, Y., F. Qu, J. Xu, and Z. Zheming. 1998. Sequence

- differences of rDNA-ITS2 and species-diagnostic PCR assay of *Anopheles sinensis* and *Anopheles anthropophagus* from China. *Journal of Medical College, People's Liberation Army* 13: 123–128.
- Tanaka, K., K. Mizusawa, and E. S. Saugstad. 1979. A revision of the adult and larval mosquitoes of Japan (including the Ryukyu Archipelago and the Ogasawara Islands) and Korea (Diptera: Culicidae). *Contributions of the American Entomological Institute (Ann Arbor)* 16: 1–987.
- Wilkerson, R. C., C. Li, L. M. Rueda, H. C. Kim, T. A. Klein, G. H. Song, and D. Strickman. 2003. Molecular confirmation of *Anopheles (Anopheles) lesteri* from the Republic of South Korea and its genetic identity with *An. (Ano.) anthropophagus* from China (Diptera: Culicidae). *Zootaxa* 378: 1–14.
- Yang, X., H. Sung, and G. Jiang, eds. 1991. *Catalogue of the insect type specimens preserved in the insect collections of the Institute of Zoology, Academia Sinica*. Agriculture Publisher, Beijing. 164 pp.
- Leopoldo M. Rueda, *Walter Reed Biosystematics Unit, Department of Entomology, Walter Reed Army Institute of Research, 503 Robert Grant Avenue, Silver Spring, MD 20910-7500, U.S.A. (email: ruedapol@msc.si.edu), mailing address: Walter Reed Biosystematics Unit, MSC MRC 534, Smithsonian Institution, 4210 Silver Hill Road, Suitland, MD 20746; Yajun Ma and Guang-Hong Song, Departments of Etiologic Biology and Parasitology, respectively, Second Military Medical University, 800 Xiangyin Road, Shanghai 200433, People's Republic of China; and Qi Gao, Institute of Parasitic Diseases, Meiyuan, Wuxi, Jiangsu 214064, People's Republic of China.*