

Vol. 97. Part 7. Pp. 177-186, 2 figs.

135400-2, P&F
21st October, 1946.

THE
TRANSACTIONS
OF THE
ROYAL
ENTOMOLOGICAL SOCIETY
OF
LONDON

Div. Insects
U.S. Nat. Mus.

World List abbreviation: *Trans. R. ent. Soc. Lond.*

CONTENTS

	PAGE
SOMEREN, E. C. C. van. Ethiopian CULICIDAE. Tribe Megarhinini—notes and descriptions	177-186, 2 figs.

970

LONDON:

PUBLISHED BY THE SOCIETY AND
SOLD AT ITS ROOMS, 41, QUEEN'S GATE, S.W.7

ETHIOPIAN CULICIDAE. TRIBE MEGARHININI—NOTES AND DESCRIPTIONS

By E. C. C. van SOMEREN.

(Section of Medical Entomology, Medical Research Laboratory, Nairobi, Kenya.)

Manuscript received 29th October, 1945.

(Read 5th June, 1946.)

WITH TWO TEXT-FIGURES.

It is convenient to divide the African *Megarhinus* Robineau-Desvoidy into two main groups and the *M. brevipalpis* Theobald and *M. lutescens* Theobald groups used here are as defined by Edwards (1941).

On examining a collection of *Megarhinus* from Kenya and Uganda, a considerable amount of colour variation was noted among the individual adults of the various species. In consequence Edwards' (1941) key was found to be inadequate for the determination of the species of the *brevipalpis* group.

The variations noted are given below under the species headings, and descriptions of the larvae and pupae are given where the early stages have not been described before. Two new species of the *lutescens* group are described and also the females of *M. lutescens* Theobald and *M. barbipes* Edwards.

A revised key, largely following that of Edwards, has been compiled to include the two new species and using, in the author's opinion, more reliable characters for the differentiation of the *brevipalpis* group.

M. brevipalpis group.

Edwards (1941) describes *M. barbipes* from one male specimen from the Mpanga Forest, Toro, Uganda, and suggests that it may perhaps be a local form of *M. phytophagus* Theobald. As I have not been able to compare *M. barbipes* with *M. phytophagus* and as the female specimens of *M. barbipes* from the Kaimosi Forest, Kenya, and Bwamba, Toro, Uganda, differ slightly from the description of *M. phytophagus* given by Theobald (1910) and Edwards (1941), I am retaining the specific status given to *M. barbipes* by Edwards. *M. barbipes* will, however, probably prove to be a subspecies of *M. phytophagus*.

The Kaimosi material was compared with three specimens of *M. barbipes* from Bwamba, Toro, Uganda, which is near enough the type locality of *M. barbipes* to make the identification of the Bwamba specimens fairly accurate.

While endeavouring to determine the imagines of this group Edwards key proved to be unsatisfactory, owing to the use, in sections 3 and 4, of characters which have proved to be variable. Thus, at section 3, the only differentiating character given for females or damaged males, when the hind tarsi are either missing or rubbed, is the colour of the abdomen. This character proved very unreliable as *M. brevipalpis* Theobald and subsp. *conradti* Grunberg, which usually have blue or green scaled tergites, may occasionally be either, "blue shading to violet" (*brevipalpis*, Edwards, 1941), or mainly purple (*conradti*, Edwards, 1941). Thus on the colour of the abdomen they could be run down to *M. phytophagus* or *M. barbipes* in Edwards' key.

M. barbipes, on the other hand, has proved to have considerably more blue on the tergites than is allowed by Edwards. It is therefore very often extraordinarily difficult to decide whether the abdomen of a specimen examined should be considered largely blue or purple scaled above.

At section 4 of his key Edwards uses the colour of the supra-alar bristles as one of the differentiating characters for *M. brevivalpis* and subsp. *conradti*. This character has also proved to be unreliable, as on examining a large series of *M. brevivalpis* the colour of the supra-alar bristles was found to vary from bright gold through dark brown to black.

The use of these two characters impaired the efficacy of Edwards' key, and more reliable characters had to be found to differentiate the species.

The male terminalia of *M. brevivalpis* subsp. *conradti*, and *M. barbipes* were all of the usual *brevivalpis* group form and showed no diagnostic characters.

A useful character for differentiating the males of *M. brevivalpis* subsp. *conradti*, and *M. barbipes*, in the event of missing or rubbed hind tarsi, was found in the vestiture of the palpi, viz. the length of the bristles on the penultimate segment. The amount of white on the fifth sternite also proved useful for differentiating the males of *M. brevivalpis* and subsp. *conradti* from *M. barbipes*.

The fifth sternite of *M. barbipes* is extensively dark, and most specimens have only a narrow line of white scales on the distal edge of the segment, but occasionally small apical lateral white patches are present. The fifth sternite of *M. brevivalpis* and subsp. *conradti*, however, has a large patch of white scales, which may or may not be interrupted in the middle.

The females are easily distinguished by the amount of white on the tarsi and by the colour of the lateral tufts of the sixth tergite.

As the tufts of the sixth tergite are the same in both sexes, section 3 of Edwards' key has been changed to make use of this character, thus grouping *M. brevivalpis* with *M. barbipes* (tufts of sixth tergite white) and *M. brevivalpis* subsp. *conradti* with *M. phytophagus* (tufts of sixth tergite mainly black). This grouping gave an opportunity to use some of the differentiating characters noted above.

Unfortunately no specimens of *M. phytophagus* were examined and the vestiture of the penultimate segment of the male palpi is not known. An alternative character to the vestiture of the male hind tarsi is the amount of white on the fifth abdominal sternite, but with the existing description of *M. phytophagus*, based on three females and one male, it is not possible to tell if this is a constant character.

Megarhinus brevivalpis Theobald.

Adult female.—On the whole the *M. brevivalpis* examined agreed with the description given by Edwards (1941) but a certain amount of variation occurred. The supra-alar and scutellar bristles were found to vary from golden to dark brown and black. The fourth tergite sometimes has lateral patches of pale scales which have a whitish gloss, or has definite basal lateral patches of white scales as on the other tergites. This character is also noted by Edwards, under variations, for subsp. *conradti*. The large white patch on the fifth sternite is not always interrupted in the middle.

Male.—More often with a few black hairs at the apex of the sixth abdominal tergite and often with two lateral patches of white scales on the seventh sternite; fifth sternite of all specimens examined with the white patch interrupted in the middle. Penultimate

segment of palpi with a few very short bristles on the inner and outer surfaces, those on the outer surface about the same length as those on the inner surface.

Pupa as described by Edwards.

Larva.—Indistinguishable from that of *M. brevipalpis* subsp. *conradti* as described by Macfie and Ingram (1922) and Hopkins (1936).

Head, lateral setae of abdomen and thorax, siphon, and anal segment as in subsp. *conradti*. Subventral tuft with 3–5 branches. Lower caudal setae with 3–5 branches and upper with 4–6 branches. Ventral brush composed of 8–9 pairs of single, strong, coarsely plumose setae. Gills short and rounded.

Specimens examined from KENYA: Nairobi, 2 males and 2 larval pelts; Mombasa, 7 males and 15 females (*van Someren and de Boer*), 4 males (*Symes and Hopkins*), and 4 males and 6 females and 2 larval pelts and 2 pupal pelts (*Teesdale*); Kaimosi Forest, 4 males and 9 females and a few larval and pupal pelts (*Garnham, Harper, and Highton*); Kisii, 1 female; Kitale, 1 female.

Subsp. *conradti* Grunberg.

Female.—All the supra-alar bristles of the specimens examined were black but in one specimen the scutellar bristles were bright golden. The colour of the abdominal tergites 4–7 of the majority of the specimens from Bwamba was a dullish purple as found in *M. barbipes* and mentioned under variations by Edwards (1941). A few specimens had brilliant metallic green scales on the tergites shading to blue towards the apex of the abdomen.

Male.—Vestiture of penultimate segment of palpi as in *M. brevipalpis* but bristles on outer surface slightly longer, but not more than $1\frac{1}{2}$ times the length of those on the inner surface. White patch on fifth abdominal sternite occasionally interrupted in the middle.

Specimens examined from UGANDA: Bwamba, Toro, 19 males and 9 females (*Harper*).

Megarhinus barbipes Edwards.

The larva, pupa, and adult female are described below and a few additional notes are given on the male.

The adult female of *M. barbipes* differs from *M. phytophagus* female by having more extensive white markings on the tarsi and by having the lateral hairs on the sixth tergite all white; black hairs, if present, very few and confined to extreme apex of segment.

Female.—*Head*. Flat scales metallic green, shading to dark blue between the eyes; round the eye margins there is sometimes a paler line which has a dull purple sheen. Tori black, with a few small flat white scales on the inner borders; first flagellar segment of antennae with a patch of small black scales above. Palpi and proboscis dark with blue or purple sheens. *Thorax*. Metallic blue-green scales on scutum dorsally, sometimes brassy scales on anterior border of scutum and scutellum, and scales on lateral borders lighter green with dull yellowish or mauve reflections. Scales on *apn* and *ppn* blue but a few white scales present. Pleural scales all white. Supra-alar and scutellar bristles usually golden, sometimes dark brown, and occasionally black. *Abdomen*. Tergite 1 green; 2–3 purple, usually with a patch or median line of blue scales, or sometimes all blue; 4–7 dull purple. White lateral patches on all tergites. Long lateral hairs on sixth tergite all white, very occasionally with a few black hairs at the apex, lateral hairs on seventh tergite black, and orange on eighth tergite. Sternites dark, 2–3 with large white lateral patches, 4 all dark, 5 very often nearly all white or with a large white patch which is sometimes narrowly interrupted in the middle, 6 with white lateral borders, and 7 sometimes all dark or with lateral white patches.

Legs blue or purple and sometimes green on tibiae. Femora white below and tibiae all dark. Tarsi dark with white rings. Fore tarsi: first segment sometimes all dark, occasionally with an indistinct pale blue area at the base, but usually there is a small basal white band or patch of white scales above which does not extend over a $\frac{1}{4}$; second segment all white; third sometimes all white, but usually white with a narrow black band at the apex, and sometimes all white above and narrowly black below; fourth with a few white scales at the base; fifth all black or with a few white scales at the base. Mid tarsi: first segment with a broad white ring at the base, extending to about a $\frac{1}{4}$ above, and may be extended in a narrow line below to a $\frac{1}{2}$; second and third all white; fourth all white above and narrowly black below for its full length, or only on apical $\frac{1}{2}$, or white all round; fifth broadly or narrowly white at the base above. Hind tarsi: first segment with a broad white basal band, which may be interrupted below, and which extends to about a $\frac{1}{4}$; second white with a narrow black ring at the apex; third with or without a white line on basal $\frac{1}{2}$ of posterior surface; segments 4-5 all dark. *Wing* scales blue. There is sometimes a small area of brassy scales at the base of the costa below.

Male the same as the female and as described by Edwards (1941). *Head*. Penultimate segment of palpi with a number of hairs on the inner and outer surfaces, those on the outer surface conspicuously longer than, some of them at least twice the length of, the hairs on the inner surface. *Abdomen* more often with a few black hairs laterally on sixth tergite. Sternites 2-3 usually all dark, white patches if present confined to small basal lateral patches, fourth all dark, fifth usually with a narrow uninterrupted line of white scales on distal edge of segment and sometimes expanding laterally to form small triangular patches, sixth with broad white lateral borders, seventh sometimes all dark but most often with broad lateral white borders. *Legs*. Fore tarsi all dark. Mid tarsi: first segment with a small white patch below; second white below on the basal $\frac{1}{2}$ or more; 3-5 all dark. Hind tarsi: first segment with a small white patch on the posterior surface at the base; second white below on the basal $\frac{1}{2}$ or all white below; 3-5 all dark.

Pupa.—Indistinguishable from *M. brevivalpis* Theobald.

Larva.—Indistinguishable from *M. brevivalpis* Theobald. Head, siphon, anal segment, and lateral setae of thorax and abdomen as in *M. brevivalpis*. Siphonal index 2; sub-ventral tuft with 3-6 branches. Lower caudal setae with 3-4 branches and upper with 4-6 branches. Ventral brush composed of 7-9 pairs single, stout, coarsely plumose setae.

Specimens examined from UGANDA: Bwamba, Toro, 2 males (*Harper*), 1 female (*Haddow*). KENYA: Kaimosi Forest, North Kavirondo, 51 males, 68 females, many larval pelts, and a few pupal pelts (*Garnham, Harper, and Highton*); Kakamega, North Kavirondo, 1 male and 2 females (*Garnham, Harper, and Highton*).

Some of the Kaimosi larvae, pupae, and adults will be deposited in the British Museum (Nat. Hist.).

M. lutescens group.

Edwards (1941) includes four species within this group, *M. lutescens* Theobald, *M. erythrurus* Edwards, *M. viridibasis* Edwards, and *M. aeneus* Evans. The paucity of material available for study made it impossible to state the exact status of *M. erythrurus*, *M. viridibasis*, and *M. aeneus*, and Edwards provisionally accorded specific status to all.

The new member of this group, to be described in this paper as *M. kaimosi* sp. n., is very similar in general colour and form of male terminalia to *M. erythrurus* and should probably be considered a subspecies of it, but owing to the uncertain status of *M. erythrurus*, *M. viridibasis*, and *M. aeneus* it was considered best to follow Edwards and accord *M. kaimosi* sp. n. specific status,

pending such time as more material of the Nigeria forms is available for examination.

Another new species *M. nairobiensis* sp. n., described below, is given specific status as the structure of the ninth tergite of the male terminalia and the vestiture of the male palpi together with the median line of dark purple scales on the sternites are considered specific characters by which to separate this species from *M. lutescens* and *M. viridibasis*.

The known larvae and pupae of this group can be separated from those of the *brevipalpis* group but it is not possible to separate the species of either group.

The larvae of the *lutescens* group are easily distinguished by the number of branches (1-3) of the subventral tuft and by the lateral setae of the abdomen and the grouping of the long and short spines on the distal edge of the saddle.

The pupae differ from the *brevipalpis* group by the length of seta S on the first abdominal tergite and by the length of seta A on tergites II-VI.

Megarhinus lutescens Theobald.

The female, one very damaged specimen with the hind legs and mid tarsi missing, agrees with the description given of the male by Edwards (1941). A few additional characters, noted in both male and female, are given below.

Adult female.—*Head*. Palpi with greenish metallic scales at bases of segments above; scales at apices of segments with blue, purple, or whitish reflections. Proboscis dark. Tori black, covered with a grey bloom, and with a few short, fine, pale hairs, on inner borders; first flagellar segment of antennae with a patch of small dark scales above. *Thorax*. In some lights the scutal scales have a metallic green sheen dorsally but scales on lateral borders golden. Scales on *apn* mainly golden but some of the gold scales have a purplish gloss. *Abdomen* as in the male but the seventh tergite has bright purple scales. Lateral tufts of tergites 6-8 golden and very short, but this may be due to rubbing. *Legs*. Fore and mid femora and tibiae as in the male. Fore tarsi dark, without white rings; mid tarsi with a broad white band at the base of the first segment; segments 2-5 missing. Hind legs missing. *Wings* with bright blue-green scales shading to yellow at the base of the costa.

Male.—*Head*. Dark scales of tuft on first flagellar segment of antennae with pale blue and whitish reflections. *Thorax*. Scutal scales dull brown but with yellow-green metallic sheens in some lights. *Abdomen*. Seventh tergite clothed with bright purple scales. Terminalia: lateral groups of hairs on ninth tergite stout and with about 16 hairs in each group.

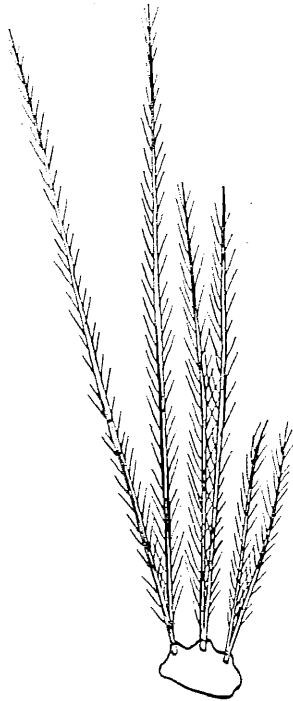
One male and one female from Mombasa (*Teesdale*). The female, from which the above description was compiled, will be deposited in the British Museum (Nat. Hist.).

Megarhinus nairobiensis sp. n.

This species is nearest to *M. lutescens* Theobald, but differs in the structure of the ninth tergite of the male terminalia and the vestiture of the male palpi, and in both sexes by having bristles on the sternopleurae and two long fine bristles on the lower mesepimeron and by having a bright purple gloss on the abdominal tergites and a median longitudinal line of purple scales on the sternites.

Adult female.—*Head*. Light metallic green scales above, golden laterally, and blue scales round eye margins. Tori dark, covered with a frosty grey dusting, and without scales; first flagellar segment of antennae with a tuft of black scales above. Palpi with

brassy scales below; scales on upper surface mainly metallic blue but with a patch of purple scales at the tip and another about the middle. Proboscis brassy below on basal $\frac{1}{2}$, remainder black with a coppery sheen. *Thorax*. Metallic blue-green scales on scutum. A large patch of silvery white scales in the middle of the pleurae, scales above and below golden; *apn* with blue and golden metallic scales, the gold scales sometimes with a purple gloss; *ppn* with golden scales. Sternopleurae with a patch of long hairs in the middle; lower mesepimeron with 2-3 long bristles. Coxal scales all golden. *Abdomen*. Mainly purple above and golden below. First tergite with metallic green scales and a few purple ones at the apex of the segment, tergites 2-7 coppery with a strong purple gloss, and eighth



I

FIG. 1.—Larva of *M. nairobiensis* sp. n. Lateral setae of abdomen.

tergite golden with a purple gloss. All tergites with broad, bright golden, lateral borders. Sternites golden and with a narrow median longitudinal stripe of purple scales on segments 2-6 and a large triangular patch of purple scales on the seventh segment. Lateral bristles on tergites 7-8 scanty and golden. *Legs* blue shading to purple with a few scattered metallic green and coppery scales, especially on the femora. Anterior surfaces of all femora golden below to near the tip which is dark all round. On the fore femora the golden scales tend to have a greenish sheen towards the tip. Posterior surfaces of femora golden on basal one-third and below to near the tip. All tibiae dark, with a narrow pale greenish stripe below which is more noticeable on the hind tibiae. Fore tarsi without bands; mid tarsi with a small inconspicuous patch of white scales on the outside near the base of the first segment, second segment nearly all white above, only narrowly dark at the base and apex, segments 3-5 all dark; hind tarsi with a small patch of white scales below near the base of the first

segment, second segment dark, third white all round on a little more than the basal $\frac{1}{2}$, segments 4-5 all dark. *Wing* scales blue-green, with a patch of bright blue scales at the base of the first vein, and a purple area involving the costa and the first vein at the apex of the wing. A patch of golden scales is present on the costa and subcosta at the base below.

Male.—Essentially the same as the female. *Head*. The first flagellar segment of the antennae has, on the upper surface, a large patch of dark scales which have blue or purple reflections. Palpi dark above with a brassy sheen basally and a blue or purple sheen apically; shaft and penultimate segments mostly golden below but with the tips of all segments dark all round. Penultimate segment with 5 long hairs below and 4 short stout bristles above. *Abdomen* with sternite eight nearly all dark. *Legs* without any white patches on mid tarsi. *Terminalia*. Style not greatly enlarged in the middle, middle third

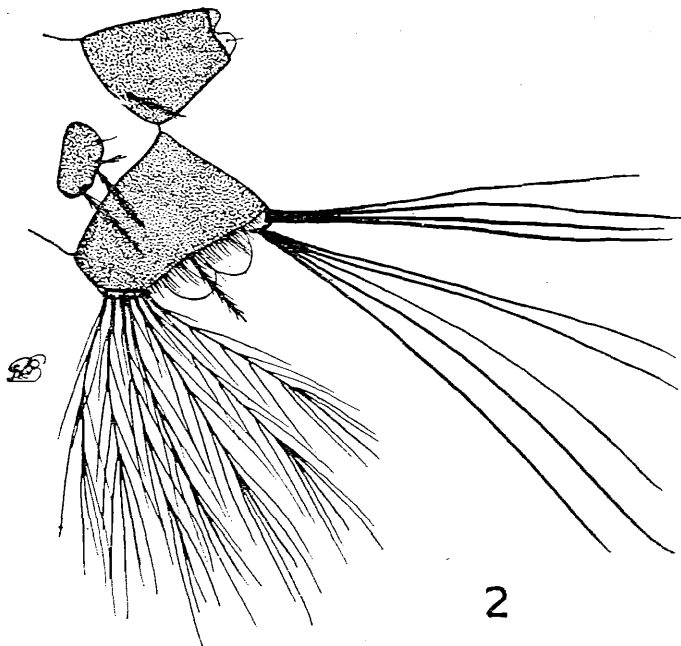


FIG. 2.—*M. nairobiensis* sp. n. Terminal segments of larva.

only $1\frac{1}{2}$ times as wide as the two ends. Tergite rather deeply emarginate in the middle and with lateral groups of about 23 long fine hairs.

Pupa lost.

Larva (fig. 2).—The larva is a clear purple colour when alive. *Head*. Antennae smooth, cylindrical, and less than $\frac{1}{2}$ the length of the head; tuft at about five-sixths and composed of 2-3 dendroid branches; sub-terminal seta a single, long, simple hair, about one-third the length of the antennae, and placed outside and a little below the tuft. Setae A, B, and C fine, simple, setae, all less than $\frac{1}{2}$ the length of the head, placed close together, and with their bases almost in a straight line. A is either a single seta or split beyond the base into 2-3 fine branches, B is split beyond the base into 3-6 branches, and C is a single seta; *d* is a single seta with 2 dendroid branches and placed out of alignment with, below, and inside C. Mentum with 7-8 coarse uneven teeth on either side of the central tooth; the central tooth long, followed on either side by one short tooth, followed by a large tooth which is a little longer than the central tooth, the following 3-4 teeth short, and the 2 basal teeth large. *Thorax*. Setae of thorax like those of the *brevipalpis* group but slightly shorter.

Abdomen. Lateral setae (fig. 1) differ from those of the *brevipalpis* group in that none of the setae of the lateral groups is stouter than the others. Siphon conical, heavily chitinised, and dark to tip; index $1\frac{1}{2}$ in crushed specimens. The subventral tuft, placed very near the base of the siphon, is usually a single, fairly stout, coarsely plumose seta, but in one specimen it is bifid on one side of the siphon. Saddle heavily chitinised and complete. The distal edge of the saddle is fringed with strong spines; on the upper and lower edges there is a group of alternating long and short spines but on either side of the lateral seta the short spines are irregularly spaced, dividing the long spines into patches of varying size, but usually a fairly large patch of long spines only, on either side of lateral seta. Lateral seta, placed on the distal edge of the saddle, is a single, stout, coarsely plumose seta, about $\frac{1}{2}$ the length of the saddle. Lower caudal seta with 3-5 branches; upper with 5-7 branches. Ventral brush composed of 7-8 pairs of single, long, coarsely plumose setae. Gills subequal, round, and about one-third the length of the saddle.

Collected by Mr. G. R. Cunningham van Someren from tree holes in the City Park, Nairobi, Kenya.

Described from 2 males, 2 females, and 3 larval pelts.

The types will be deposited in the British Museum (Nat. Hist.).

Megarhinus kaimosi sp. n.

This species is apparently very similar to *M. erythrurus* Edwards (ex description) but differs from *M. erythrurus* by having a dark median longitudinal line of purple scales on the sternites which are otherwise bright golden yellow.

Adult female.—*Head*. Flat scales on head metallic green with a narrow line of blue scales round the eye margins. Tori black, with a grey bloom, and without scales; first flagellar segment of antennae with a patch of small dark scales above. Palpi dark, with brassy or coppery sheens, and two patches of metallic blue or purple scales above, one at the apex and one about the middle. Proboscis dark. *Thorax*. Scutum covered with flat blue-green scales. Scales on *apn* blue; *ppn* with golden scales below and a narrow line of blue-green scales above. Pleurae with a large patch of white scales in the middle; lower sternopleurae and pre-alar area covered with golden scales which have a purple sheen. At least two bristles on the lower mesepimeron. Fore coxae golden with or without patches of golden scales which have a purple sheen; mid and hind coxae with a patch of white scales at the base of each, fore coxae all gold. *Abdomen*. Scales on first tergite blue or sometimes green; second tergite sometimes blue and sometimes green or purple with a patch or sprinkling of blue scales; tergites 3-7 all purple, sometimes 3 has a blue sheen; eighth tergite purple or golden. All tergites with narrow lateral borders of golden scales which have a purple sheen. Sternites golden, gold scales sometimes with a purple sheen, and a median longitudinal line of dark purple scales on segments 2-6; seventh segment with a broad triangular patch of purple scales. Lateral tufts of tergites 6-8 bright red. *Legs* dark, with purple and blue sheens. All femora dark above and golden below, fore femora only narrowly so towards the apex. Fore and mid tibiae all dark, hind tibiae with a patch of white or brassy scales below at two-thirds. Fore tarsi all dark. Mid tarsi: first segment with or without a white patch below at the base, the white patch sometimes extends on to the upper surface to form an ill-defined, narrow, white ring, which is slightly removed from the base of the segment; second segment with a white patch below on the basal $\frac{1}{2}$ or all white below; here again the white scales may extend on to the upper surface. Hind tarsi: first segment with a white patch below near the base; third segment white below on the basal two-thirds. *Wing* scales blue and sometimes a small patch of brassy scales below at the base of the costa.

Male.—Essentially the same as the female. *Head*. Palpi dark above, with a pale bluish area at apex and about the middle of the shaft another pale bluish area which extends towards the base; golden below with narrow dark rings at the base, middle, and apex. Penultimate segment dark above and golden below with a narrow dark ring at the base and a broader one at the apex; 11–15 short hairs above and 9–12 longer hairs below. Ultimate segment all dark. *Abdomen*. Same as in the female but the golden scales of the sternites sometimes have a more pronounced purple sheen. The median longitudinal stripe of dark purple scales on sternites 2–5 is sometimes broader than in the female and narrower on 6–7; the triangular patch on the seventh sternite is sometimes reduced to a narrow median line. Lateral hairs of tergites 6–8 long and bright red, forming conspicuous bright red caudal tufts. *Legs* as in the female. White markings on under surfaces of tarsi very variable, sometimes extending on to upper surfaces to form narrow or broad, ill-defined, white bands, but usually at least a narrow dark stripe the full length of the tarsal segment above. *Terminalia*. Middle third of style enlarged, about twice the width of the two ends; ninth tergite not very deeply emarginate and with 26–29 hairs in each lateral group.

Pupa.—Indistinguishable from *M. erythrurus* as described by Edwards (1941). Additional characters noted are as follows:—all setae sparsely and finely plumose. Dorsal seta fairly long and placed well behind the trumpets. Setae O, P, and R single or sometimes split distally into 2–3 branches; O and R about one-third the length of P. Float hair not such a large tuft as in the *brevipalpis* group; fewer branches and not so dendritic. K 8–9 times the length of H. L and M very short, about equal in length to H, single or with 2–3 branches. Tergite II: B single and about the length of the preceding segment, C single or with 2–3 branches and shorter of equal in length to B. Tergites III–V: C single and the same length as, or shorter than, B. Tergite VIII: A stouter than on the preceding segment and about one-seventh the length of the paddles. Paddles pale and square ended; fringe reaching to $\frac{1}{4}$ on external margin.

Larva.—Indistinguishable from *M. nairobiensis* sp. n. Head, siphon, saddle, and setae of abdomen and thorax, as in *M. nairobiensis*. Subventral tuft a single, stout, coarsely plumose seta, or divided into 2–3 branches beyond a $\frac{1}{4}$. Lower caudal seta with 5–6 branches; upper with 6–9 branches. Ventral brush composed of 8–9 pairs, long, single, coarsely plumose setae.

Collected by Dr. Garnham, Mr. Harper, and Mr. Highton, Medical Department, Kenya, from the Kaimosi Forest, North Kavirondo, Kenya.

Described from 5 males and 4 females and 3 pupal pelts and 4 larval pelts bred from tree holes.

The types will be deposited in the British Museum (Natural History).

Key to Ethiopian Species of *Megarhinus*.

1. Lateral tufts of 7th abdominal tergite black 2.
These tufts orange, golden, or red 6.
2. Lateral tufts of 8th tergite orange 3.
Lateral tufts of 8th tergite black *evansae* Edwards.
3. Lateral tufts of 6th tergite mainly white; black hairs, if present, very few at apex of segment 4.
Lateral hairs of 6th tergite largely black 5.
4. Female: second segment of mid tarsi with a broad white ring basally; third all dark. Male: hind tarsi without long hairs at the base of 1st segment; penultimate segment of palpi with a few very short bristles on inner and outer surfaces, those on outer surface the same length as those on inner surface *brevipalpis* Theobald.

- Female: segments 2-3 of mid tarsi all white. Male: hind tarsi with long hairs at base of first segment; penultimate segment of palpi with a number of hairs on inner and outer surfaces, those on outer surface conspicuously longer than, one or more at least twice as long as, the hairs on inner surface *barbipes* Edwards.
5. Female: second segment of mid tarsi with a broad white basal ring; third all dark. Male: hind tarsi without long hairs at the base of first segment; 5th sternite with a large triangular patch of white scales, which may or may not be interrupted in the middle subsp. *conradti* Grunberg.
Female: segments 2-3 of mid tarsi all white. Male: hind tarsi with long hairs at the base of first segment; 5th sternite nearly all white *phytophagus* Theobald.
6. Lateral tufts of tergites 6-8 orange or golden 7.
These tufts red 8.
7. Abdominal tergites coppery golden colour; sternites bright golden yellow with no dark markings, except perhaps on seventh segment *lutescens* Theobald.
Abdominal tergites bright purple; sternites bright golden yellow with a median line of dark purple scales on each segment *nairobiensis* sp. n.
8. Sternites with a median longitudinal stripe of dark purple scales on segments 2-6 *kaimosi* sp. n.
Sternites 2-6 all golden 9.
9. Red caudal tufts large; male palpi with penultimate segment bristly above and hairy beneath; abdomen purple *erythrurus* Edwards.
Red caudal tufts smaller; male palpi with few bristles and no hairs 10.
10. Tergites 1-3 green scaled; mid coxae with white scales at base *viridibasis* Edwards.
At most tergite 1 green; mid coxal scales all golden *aeneus* Evans.

ACKNOWLEDGEMENTS.

I wish to thank Dr. Garnham, Mr. Harper, and Mr. Highton for allowing me to examine their series of *Megarhinus* from the Kaimosi Forest, and Dr. V. G. L. van Someren and Mr. Teesdale for lending me specimens of *M. brevipalpis*, and my husband Mr. G. R. Cunningham van Someren for the figure of *M. nairobiensis*.

REFERENCES.

- EDWARDS, F. W., 1941, *Mosquitoes of the Ethiopian Region*. Part III.
HOPKINS, G. H. E., 1936, *Mosquitoes of the Ethiopian Region*. Part I.
MACFIE, J. W. S., and INGRAM, A., 1922, *Bull. ent. Res.* 13: 410.
THEOBALD, F. W., 1910, *Monograph of the Culicidae* 5: 102.