

Vol. XVIII, Part III

September 1956

# The Indian Journal of Entomology

EXECUTIVE COUNCIL cum EDITORIAL BOARD, 1956

*President*

E. S. NARAYANAN, M.A., PH.D. (LOND.), D.I.C., F.R.E.S.

*Vice-Presidents*

H. S. PRUTHI, Sc.D. (CANTAB.) (*Ex-President*)

K. B. LAL, PH.D. (EDIN.) (*Ex-President*)

M. L. ROONWAL, PH.D. (CANTAB.)

S. PRADHAN, PH.D. (LOND.), D.Sc. (LUCK.)

*Councillors*

K. N. TREHAN, PH.D. (LOND.)

V. TIRUMALA RAO, B.Sc. (AG.), F.R.E.S. F.E.S.I.

*Ex-officio Councillors — (Branch Presidents)*

M. G. RAMDAS MENON, PH.D., *New Delhi*

G. A. PATEL, PH.D. (CORNELL), *Poona*

SHUMSHER SINGH, B.Sc. (HONS.), ASSOC.IARI., *Kanpur*

C. THAKUR, M.S., PH.D. (WIS.), *Pusa*

S. S. SINHA, M.Sc., *Sabour*

P. J. DEORAS, PH.D. (DURH.), *Bombay*

G. L. ARORA, M.Sc., PH.D. (LOND.), *Hoshiarpur*

S. MASHHOOD ALAM, PH.D. (LOND.), *Aligarh*

*General Secretary*

*Joint-Secretary & Treasurer*

H. N. BATRA, B.Sc. (AG.), ASSOC.IARI.

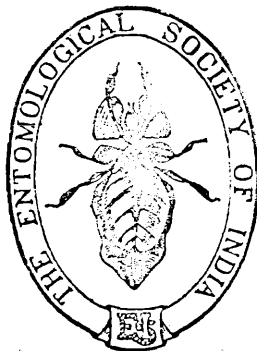
P. B. MUKHERJEE, B.Sc., ASSOC.IARI.

*Chief Editor*

*Managing Editor*

Y. RAMCHANDRA RAO, M.A., F.R.E.S.

D. SESHAGIRI RAO, B.Sc., *Bangalore*



PUBLISHED BY

THE ENTOMOLOGICAL SOCIETY OF INDIA  
NEW DELHI

(Date of Publication : March 1957)

Published in 4 Parts

Price Per Part Rs. 6 in India

Price abroad: Rs. 6-8

REV. IND.  
U.S. MAIL: REG.

SOUTH WESTERN CENTRAL PROVINCES  
 DEPARTMENT OF AGRICULTURE  
 TECHNICAL ASSISTANT  
 TECHNICAL ASSISTANT  
 TECHNICAL ASSISTANT  
 TECHNICAL ASSISTANT  
 TECHNICAL ASSISTANT

1004

## ANOPHELINE FAUNA OF UTTAR PRADESH

### Part III. Key for the Identification of the Species

By H. M. L. SRIVASTAVA, M.Sc., ASSOC.I.A.R.I., F.R.E.S.

*Research Scholar, Zoology Department, University of Lucknow*

Puri (1950) published a synoptic table for the identification of Anopheline mosquitoes, recorded from the United Provinces (now Uttar Pradesh) and Peninsular India, which includes the quondam divisions of Bihar, Bombay Presidency, Central Provinces, Hyderabad State, Madras Presidency, Mysore State and Orissa. This synoptic table dealt with more than 35 Anopheline species. But as the Anopheline mosquitoes of Uttar Pradesh are only about half the above number, the following modified key, which deals only with the Anopheline mosquitoes of Uttar Pradesh, is put up for facilitating their ready recognition.

-1004

- |  |                          |
|--|--------------------------|
| Tips of hind legs white .. .. .  | 1                        |
| Tips of hind legs not white .. .. .  | 5                        |
| 1. Femora and tibia not speckled .. .. .   | 2                        |
| Femora and tibia speckled .. .. .  | 3                        |
| 2. Wings with fifth longitudinal vein mainly dark, and with a dark spot about the middle near the fork .. .. .   | <i>A. annularis.</i> ✓   |
| Wings with fifth longitudinal vein mainly pale, without a dark spot about the middle .. .. .   | <i>A. pallidus.</i> ✓    |
| 3. Two or three terminal hind tarsal segments completely white. Palpi with one narrow proximal and two broad distal pale bands .. .. .   | <i>A. splendidus.</i> ✓  |
| Less than two terminal hind tarsal segments completely white. .. .   | 4                        |
| 4. Sixth longitudinal wing vein with three dark spots only, whole of the hind terminal tarsal segment and part of the next white .. .. .   | <i>A. maculatus.</i>     |
| Sixth longitudinal wing vein with more than three dark spots. Only part of the hind terminal tarsal segment white. Tibio-tarsal joint of hind leg without any broad band .. .. . | <i>A. tessellatus.</i> ✓ |
| 5. Femora and tibia not speckled .. .. .   | 6                        |
| Femora and tibia speckled .. .. .  | 15                       |
| 6. Less than four dark areas on costa involving both the costa and the first longitudinal vein .. .. .   | 7                        |
| At least four dark areas on costa involving both the costa and the first longitudinal vein. .. .. .  | 9                        |

7. Inner quarter of the costa mainly dark, though there may be some scattered pale scales .. .. . 8  
 Inner quarter of the costa mainly pale .. .. . *A. gigas.* ✓
8. Inner one-third or one quarter of costa with scattered pale scales and basal half of vein 6 with scattered black scales. Palpi dark  
 .. .. . *A. barbirostris.* ✓  
 Inner third of costa entirely dark scaled, basal half of vein 6 without scattered black scales except near extreme base. Palpi with pale bands .. .. . *A. hyrcanus.* ✓
9. Joints between tarsal segments of forelegs with broad pale bands .. .. . 10  
 Tarsal segments of fore legs not banded or with only very narrow pale bands at the joints .. .. . 11
10. Palpi of female with the dark pre-apical area equal to or nearly equal to the pale apical band .. .. . *A. subpictus.* ✓  
 Palpi of female with the dark pre-apical area not more than half the length of the apical band .. .. . *A. vagus.*
11. Third longitudinal vein all dark .. .. . *A. culicifacies.* ✓  
 Third longitudinal vein with a pale area or entirely pale .. 12
12. Palpi of female with two pale distal bands, both broad, separated by a dark intervening band which is about equal in width to the pale apical band or it may be narrower .. .. . 13  
 Of the two distal pale bands on palpi of female the second band usually narrow, the dark intervening band wider than the pale apical band. .. .. . *A. fluviatilis.* ✓
13. Wings without a fringe spot at the termination of the sixth longitudinal vein .. .. . 14  
 Wings with a fringe spot at the termination of the sixth longitudinal vein. Proboscis with marked paleness on distal half or third *A. aconitus.* ✓
14. Basal area of costa with a pale interruption, or some indication of this, such as a pale scale or so on at least one wing: proboscis without any flavescent area, or with only a tache on ventral aspect.....  
 .. .. . *A. minimus.* ✓  
 Basal area of costa without any pale interruption or indication of such: proboscis with faint to conspicuous flavescence on distal half, not confined to central aspect only but involving more or less the whole of the terminal half of the organ .. .. . *A. varuna.*

15. Palpi of female with one narrow proximal and two broad distal pale bands. Palpi of both sexes usually speckled ... *A. stephensi*.

#### ACKNOWLEDGMENT

The author is thankful to Dr. M. B. Lal, D.Sc. (Luck.), D.Sc. (Edin.), F.A.Sc., Professor of Zoology, University of Lucknow for providing all facilities in the Department in recording the observations expressed in the present part as well in Parts I and II of the paper published earlier. The author is also grateful to Sri. Y. Ramchandra Rao, for making valuable suggestions for improving the manuscript.

#### REFERENCE

- PURI, I. M., 1950, "Synoptic table for the identification of the Anopheline mosquitoes of India." *Health Bulletin No. 10*, Manager of Publications, Delhi.

(Received for Publication on 10th December 1956)