

The holotype of *Aedes (Geoskusea) tonsus* Edwards (Diptera : Culicidae)

By P. F. MATTINGLY

British Museum (Natural History)

THE holotype of this species has only been very briefly described. The terminalia have not been figured. No other specimen is known. The present redescription was undertaken at the request of Dr. E. N. Marks, who is preparing a revision of the New Guinea members of the subgenus.

Aedes (Geoskusea) tonsus Edwards

Aedes (Skusea) tonsus Edwards, *Bull. ent. Res.* **14** : 390, 1924.

Aedes (Geoskusea) tonsus Edwards, *Ibid.* **20** : 341, 1929.

Aedes (Geoskusea) tonsus Edwards of Mattingly, *Cul. mosq. Indomalayan area* **4** : 45, 1959; Belkin, *Mosq. S. Pacif.* **1** : 333, 1962.

Holotype ♂, Saparoea, iii.1922 (*S. L. Brug*) in British Museum (Nat. Hist.).

Adult male.—Wing length about 2.2 mm. Proboscis slender, dark, somewhat curved down towards tip, about half as long again as antenna and slightly longer than fore femur. Palps slender, dark, about one-fourth length of proboscis. Antenna strongly plumose, the two terminal segments about two-thirds length of remainder. Tori bare. Back of head with all scales broad, mainly dark but paler at sides and round eye margins. Upright scales dark, largely confined to occipital region but 1 or 2 further forward towards eye margins. Eyes contiguous. Scutum dark brown, covered with very small narrow dark brown scales. Acrostichal and dorsocentral bristles well developed. Scutellum entirely denuded of scales except for 1 or 2 narrow ones on lateral lobes. Pleura paler than scutum, largely devoid of scales but some broad transparent scales present in posterodorsal corner of *ppn* and anterodorsally and posteroventrally on sternopleuron. Coxae with patches of whitish scales. Hind femur pale below towards base on both anterior and posterior aspects, otherwise legs dark. Mid-femur with a patch of short, fine hairs at about two-thirds distance from base to apex on anterior surface. Fore femur without such a patch. Fore and mid-femora each with some fine hairs in about the same position on posterior surface. Hind tibia without long hairs on posterior surface. Fore and mid-tarsal claws all toothed. Wings dark. Plume scales narrow. Remigium with a single very small bristle. Alula with narrow fringe scales only. Knob of haltere with creamy scales. Abdomen with tergites mainly dark brown, II–V with faint indications of narrow pale basal bands and with creamy basal lateral spots. Posterior tergites missing. Sternites dark, paler towards base. Terminalia as figured (fig. 1). “Basal lobe” of coxite not differentiated. Most of the hairs in this area missing but they can be seen to have occupied an outer and an inner row, setae in the latter being shorter than those in the former. Numerous short hairs within the inner row.

Female and early stages.—Unknown.

Bionomics.—No information.

Distribution.—Saparoea. Edwards (1932) gives Amboina, but this is merely a general indication, as is shown by his type label, which reads “Amboina: Saparoea” and the original type citation (Edwards, 1924), which is similar. Brug (1934) has tentative records from Celebes and Nias, but his specimens apparently had lower mesepimeral bristles, and it seems unlikely that they could have belonged to the present species or even to the subgenus. Dr. J. N. Belkin kindly compared the foregoing description and figure with his unnamed *Geoskusea* from Bougainville (Belkin, 1962, p. 338). He tells me that the hairs on the inner basal aspect of the coxite are quite different in the latter, which also differs in having the antenna and palps about $\times 0.85$ and $\times 0.2$ the length of the proboscis respectively and in lacking the patch of short, fine hairs on the mid-femur.

Proc. R. ent. Soc. Lond. (B). **34** (1–2). Pp. 23–24. 1 fig. 1965.

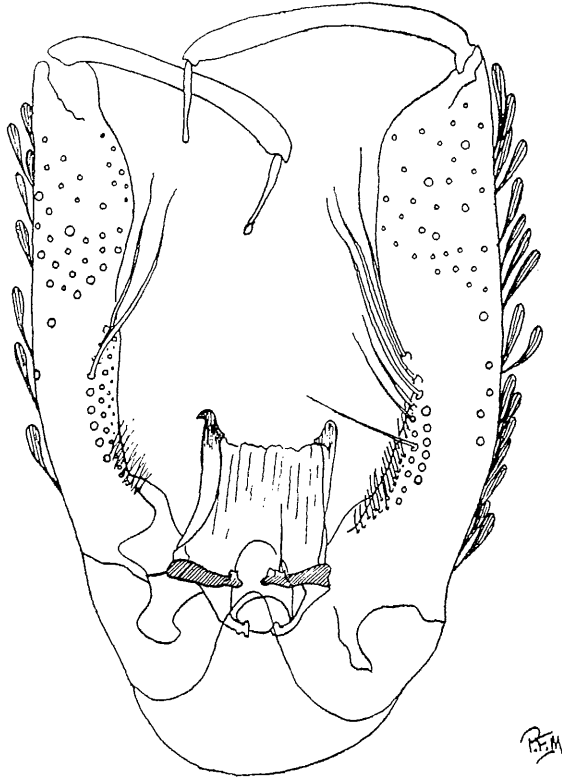


FIG. 1.—*Aedes (Geoskusea) tonsus*: male terminalia in tergal aspect.

REFERENCES

- BELKIN, J. N., 1962, *Mosquitoes of the South Pacific*. Berkeley & Los Angeles: Univ. of California Press.
- BRUG, S. L., 1934, Notes on Dutch East Indian mosquitoes. *Bull. ent. Res.* **25** : 501-19.
- EDWARDS, F. W., 1924, A synopsis of the adult mosquitoes of the Australasian Region. *Bull. ent. Res.* **14** : 351-401.
- 1929, Mosquito notes. VIII. *Ibid.* **20** : 321-43.
- 1932, *Diptera, Culicidae* in Wytman, P., *Genera Insectorum*, **194**. Brussels.
- MATTINGLY, P. F., 1959, *The culicine mosquitoes of the Indomalayan area*. IV. London: Brit. Mus. (Nat. Hist.).

FROM
**THE PROCEEDINGS OF THE
ROYAL ENTOMOLOGICAL
SOCIETY OF LONDON**

**The Royal Entomological Society of London,
41, Queen's Gate, S.W.7**

