

**FICALBIA (FICALBIA) JACKSONI SP. N., A NEW SPECIES OF MOSQUITO (DIPTERA, CULICIDAE) FROM HONG-KONG.**

By P. F. MATTINGLY.

**Ficalbia (Ficalbia) jacksoni sp.n.**

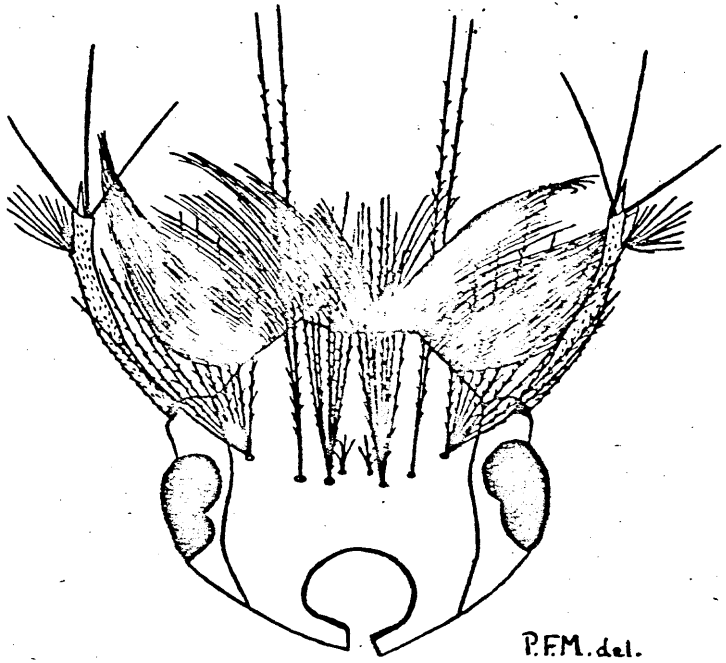
*Adult.*—Differs from all the other known members of the sub-genus in the markings of the abdomen and hind femur. Intermediate with respect to the length of the first flagellar segment of the ♀ antenna between *F. uniformis* Theo. and *F. minima* Theo. on the one hand and *F. nigra* Theo. and *F. circumtestacea* Theo. on the other.

*Female.*—Wing length about 2 mm. *Head* with decumbent scales of vertex broad, flat, pale brownish. Upright forked scales dark brown, restricted to nape. Palps and proboscis dark brown, the latter markedly swollen at the tip. Palpi minute, not much longer than the clypeus. Proboscis about as long as or slightly longer than the abdomen. Antennae with the first joint of the flagellum about 4× as long as the second. *Thorax* with scutal integument dark brown and shiny. A sparse covering of narrow, curved, black or very dark brown scales on the mesonotum. Dorsocentral bristles long and strong. Acrostichals shorter. Pleurae yellowish, darkened anteriorly. Wings with the veins clothed with broad dark scales. Upper fork cell about 1.7× as long as its stem. Halteres whitish with the knobs dark brown. Legs dark. Hind femur pale below and posteriorly and with a very conspicuous pale knee-spot about twice as long as broad. A small and relatively inconspicuous pale spot present at the apex of the tibia. *Abdomen* clothed with broad flat scales. Tergites dark with indistinct pale basal lateral triangles. Sternites pale with continuous dark apical bands.

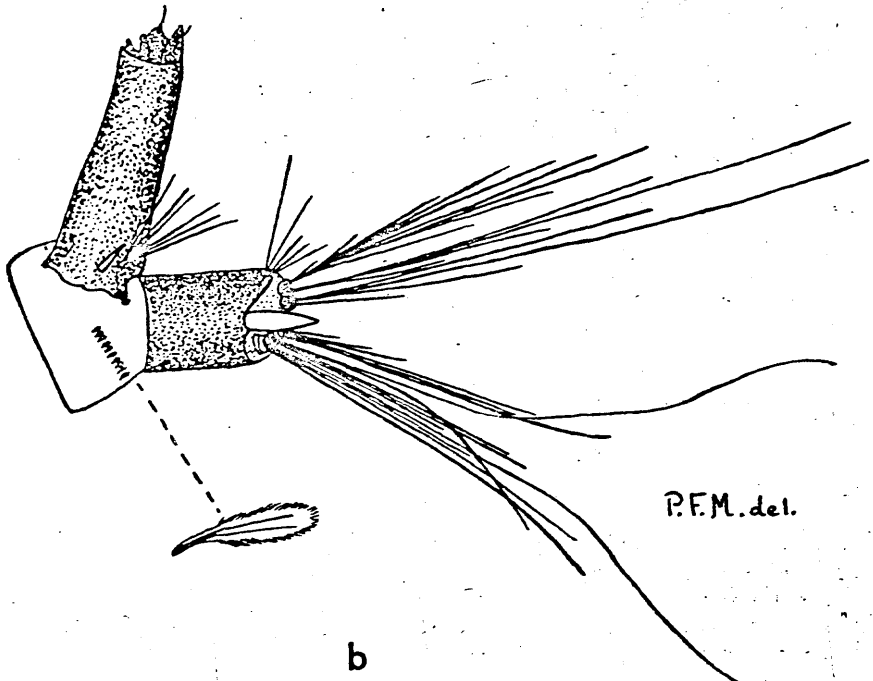
*Male.*—Resembles *F. minima* and differs from the other species of the sub-genus in the very short palps. Proboscis very strongly swollen apically. Palps minute, much as in the female. Other external characters as in the female. The terminalia will be dealt with in a later communication together with those of the other members of the sub-genus, none of which have as yet been described.

*Pupa.*—Closely resembles that of *F. uniformis*, appearing to differ mainly in the simple apical paddle hair. *Trumpets* moderately long, slender, the basal half tracheoid. Meatus rather less than half the total length. Dorsal seta tuft-like, situated behind and between the trumpets, much as in *uniformis* but larger. *Abdomen* much as in *uniformis*. Setae "B" and "C" with about 14 branches on segment II, decreasing to about 7 on segment VI. All setae on VII and VIII small and inconspicuous. *Paddles* rather small and gear-shaped, infuscated at the base. Outer edge with coarse spines for about two-thirds the distance from the apical bristle to the base. Inner edge bare. Apical bristles simple.

*Larva* (fig. 1).—Differs from that of *uniformis* in having a comb composed of scales and in the possession of a single pecten spine and from *minima* in the shape of the antenna, relatively simple pre-clypeal spines and more delicate and more numerous comb scales. *Head* broader than long, dark brown with a broad pale band running from side to side across the middle (visible only in cast skins). Antenna brown with a dark ring at the base. Shaft long, slender, curved, spiculated, slightly thickened near the middle. Antennal tuft with 6-9 branches, situated at about 4/5 the distance from the base. Apical and pre-apical bristles arising closer together even than in *minima*. Pre-clypeal spines long, dark, with a conspicuous secondary denticle on the inner aspect near the base. Bases of setae "A," "B" and "C" in a straight line. The distance between the bases of "B" and "C" about 3/5 that between "A" and "B." Base of seta "d" inside and anterior to that of "C." Seta "A" with 10-15 sub-plumose branches, "B" with 2, both very long, "C" with 8-11, "d" small and 4-branched. *Thorax* with a number of large stellate



a



b

FIG. 1.—*Ficalbia jacksoni* sp. n. Larva. a, Head; b, terminal segments.

setae on the dorsal surface. Certain of the shoulder hairs and pleural hairs very long, up to 3 × the length of the head or more. *Abdomen* with a row of stellate setae dorsally on the posterior margin of each of the first 7 segments. Comb of about 12 long, narrow, delicately fringed scales. Siphon with a single simple pecten spine at the base immediately below the siphonal tuft. The latter more than half the length of the siphon with 6-9 branches. Siphonal valves large. Siphonal index about 3. Anal segment with the lateral seta split into about 6 frayed branches. Upper (inner) caudal seta with about 3 short branches near the base, beyond which the shaft divides into about 6 very long branches. Lower (outer) caudal seta with the main stem very long and 2-3 shorter branches arising near the base. Margin of anal segment without spicules. As far as can be seen the "gills" are short and pointed in mounted specimens.

*Breeding-places.*—The record of the breeding-place of the type male was lost together with all other records of the Malaria Bureau, Hong-Kong, as a result of enemy action. The allotype and two paratype females came from a grassy hill-side swamp adjoining the seaside village of Shek O on Hong-Kong Island.

*Types.*—Holotype-paedotype ♂ bred out Hong-Kong, China, 3.v.1935 (*R. B. Jackson*). Allotype ♀ bred out Hong-Kong, China, 23.x.1946 (*R. B. Jackson*). Both types now in the British Museum.

The type ♂ is accompanied by a liaison larval pelt and one paratype ♀ by liaison larval and pupal pelts. In addition to these the paratype material includes 4 larval and one pupal pelts, not individually associated, but bearing the same data as the paratype adults.

#### LITERATURE.

- BARRAUD, P. J., 1934, *Fauna of British India. CULICIDAE. Tribes Megarhinini and Culicini.* London.
- BOHART, R. M., 1946, *A Key to the Chinese Culicine Mosquitoes.* Bur. Med. and Surg., Navy Dept., Washington, D.C.
- EDWARDS, F. W., 1932, *Genera Insectorum. Fam. CULICIDAE.* Bruxelles.
- , 1941, *Mosquitoes of the Ethiopian Region 3. Culicine Adults and Pupae.* London: Brit. Mus. (N.H.).
- HOPKINS, G. H. E., 1936, *Mosquitoes of the Ethiopian Region 1. Larval Bionomics and Taxonomy of Culicine Larvae.* London: Brit. Mus. (N.H.).
- WIGGLESWORTH, V. B., 1929, The early stages of some West African Mosquitoes. *Bull. ent. Res.* 20 : 59-68.