

VOL. XXI, Part 2.—pp. 125-260

JULY, 1930



BULLETIN OF ENTOMOLOGICAL RESEARCH

LONDON.

THE IMPERIAL INSTITUTE OF ENTOMOLOGY,

41, QUEEN'S GATE, S.W. 7.

Price 6s. net.

All Rights Reserved.

3
70

A NEW VARIETY OF *ANOPHELES FUNESTUS*, GILES,
FROM SOUTHERN RHODESIA.

By H. S. LEESON,

Department of Entomology, London School of Hygiene and Tropical Medicine.

While investigating the ANOPHELINI of Southern Rhodesia in connection with the research on blackwater fever conducted by the London School of Hygiene and Tropical Medicine, an undescribed variety of *Anopheles funestus*, Giles, was taken in the dry season. Nine males and eight females were collected from May to August 1927, near Shamva, and one male and one female in July 1928, in the Fungwi Native Reserve. All were caught out-of-doors except two females, one of which was taken in a shed constructed of grass and the other in a native hut. The remainder were taken in close association with the earth; in surface drains, caves and crevices in rocks. No specimens were taken in or near European habitations, but all in undeveloped country. No adults were bred out, so that the following description is based on individuals captured "wild." The larva is unknown.

***Anopheles funestus* var. *fuscivenosus*, nov.**

♀ *Head* clothed with black and white upright forked scales; white ones situated towards vertex; long white scales projecting forward from front. *Proboscis* dark brown with paler apex. *Palpi* clothed with dark brown scales; base black; a pale band, very narrow and obscure, situated at apex of first joint; a second pale band, very little wider, situated at apex of second joint; third and terminal pale band very broad, equal to half of fourth joint. *Antennae* all brown; base slightly paler. *Thorax*: general appearance dark brown. Prothoracic lobes with black bristles. Scutum with integument dark brown, covered in certain lights with a greyish bloom; clothed with short hairs, but with long white narrow curved scales towards the front margin. Spiracular hairs apparently absent. One propleural hair. *Scutellum* with black bristles. *Legs* dark brown, unicolorous, except that the articulations of the joints are indistinctly paler. *Wings* (fig. 1): general appearance dark. Costa with

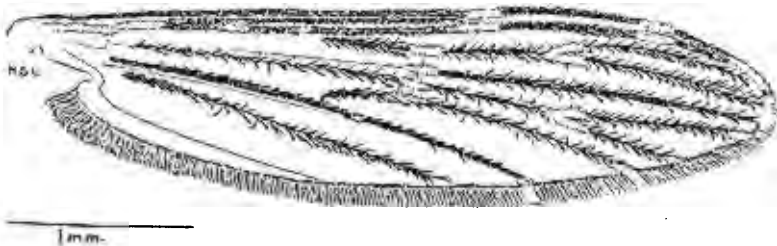


Fig. 1. Wing of *Anopheles funestus* var. *fuscivenosus*, nov.

three pale spots, remainder all dark; one pale spot situated beyond the middle of the costa at junction with subcostal vein; second pale spot situated at half the distance between the first pale spot and apex of the wing; third pale spot situated just before apex of the wing. First longitudinal vein with base pale; two pale spots beyond the junction with subcostal vein; pale spots also present opposite those on the costa. Other pale spots very small, consisting of a few pale scales situated at the cross-veins, at the bases of the anterior and posterior fork-cells, also at the distal ends of third vein and each branch of the fourth and fifth veins. With a high power a very few pale

scales can be seen on the lower branch of the fifth vein towards the base. The pale fringe spot at the apex of the wing separated from the third costal spot by a small black fringe spot between the ends of the branches of the second vein; remainder of fringe from the third vein to the base all dark, except for indistinct pale fringe spot opposite the branches of the fifth vein. The base of the posterior fork-cell nearer to the apex of the wing than that of the anterior fork-cell; the posterior fork-cell shorter than the anterior. The supernumerary cross-vein slightly nearer to the apex of the wing than the mid cross-vein, but only by about its own thickness; the posterior cross-vein about its own length nearer to the base of the wing than the mid cross-vein. *Abdomen* with the integument dark brown, almost black; no scales; hairs brown.

♂. With the natural exception of the essential sexual differences the male coincides with the above description. The terminal segment of the male palpi has the apex pale and another inconspicuous pale band midway.

Dimensions: length of body from front of head to tip of abdomen, 4 mm.; length of wing, 4 mm.

SOUTHERN RHODESIA: Shamva, May–August, 1927, 9 ♂♂, 8 ♀♀, taken in native huts and drains near Mazoe River, and 1 ♂ and 1 ♀ from the Fungwi Reserve, July, 1928 (*H.S.L.*).

Type ♂ and ♀ presented to British Museum.

The wing of this mosquito closely resembles that of the female of *Anopheles smithi*, Theobald, but wings of males captured at the same time and place as the females are identical in the arrangement of the scales; also the apical segment of the female palpi is not dark but broadly pale-banded. From true *Anopheles funestus* this variety differs in its larger size and in the entirely dark veins, and from *Anopheles funestus* var. *bisignatus*, Grünberg, in the absence of a pale costal spot before the middle of the wing.

This mosquito, while of distinct appearance through its dark coloration and large size, possesses in the male hypopygium no structural differences which would separate it from *Anopheles funestus*. It has, therefore, been thought advisable to regard it as of varietal rather than specific rank.