

Purchased by the Agricultural Department
of Agriculture

Four new Mosquitoes from the Belgian Congo

By

F. W. EDWARDS

(British Museum, Natural History).

1. — *Aedes* (*Aëdimorphus*) *congolensis* sp. n.

Head with narrow yellowish scales in the middle, black sublateral patches of flat scales, and flat white scales at the sides. Tori and clypeus light brownish, bare. Palpi and proboscis dark. Palpi of male exceeding the proboscis by more than the length of the last segment; last two segments rather short, subequal and densely hairy. Palpi of female about one-seventh as long as proboscis.

Thorax with integument rather light brown. Scutal scales all narrow, mostly dark brown, but with extensive golden mottling. Scutellar scales whitish-ochreous, all broad on the male, some or all of the scales on the median lobe narrow in the female. Posterior pronotal lobes with fine bristles only in the male, a few narrow dark scales in the female. No postspiracular scales. Sternopleura with a couple of small patches of whitish scales and numerous bristles. No lower mesepimeral bristle. *Abdomen* of male with dull white basal bands on each segment; of female unbanded dorsally, with dull whitish-ochreous lateral spots; venter whitish, with ill-defined dark apical bands on the sternites. *Hypopygium* (see figure 1) resembling that of *A. tarsalis* but different in detail; side-piece without basal lobe. *Legs* dark; hind femora white to the tip on the outer side; hind tibia on the outer side with a rather

small dull white apical spot. *Wings* with the scales all dark, the outstanding ones narrow. Fork-cells of female more than twice as long as their stems. Wing-length about 3-3.5 mm.

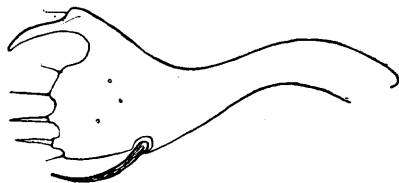


Fig. 1. — Male clasper of *Aëde* (*Aedimorphus*) *congolensis* sp. n.

Stanleyville, 1923 (Dr. MOUCHET); 3 ♂ 3 ♀ cotypes in British Museum, others in Tervueren and Brussels Museums.

This rather obscure species falls in the *domesticus* group of the subgenus according to my classification (*Bull. Ent. Res.*, XV, p. 268, 1925). It is most nearly allied to *A. tarsalis* NEWST., differing in the dull white colour of the abdominal markings, and the smaller duller white spots on the hind tibia. The colouration is more like that of *A. abnormalis* THEO., which however has postspiracular scales and different male claspers.

2. — *Aëdes* (*Banksinella*) *crassiforceps* sp. n.

Allied to *B. lineatopennis*, which it resembles in its thoracic markings as well as the dark costa and proboscis, and dark hind tibia with only an indistinct yellowish spot at the tip, but differs as follows: Yellow scales of wings less numerous, only a few present at the base of the radius. Abdomen unbanded. Terminal segment of male palpi relatively short. Hypopygium (fig. 2): Sidepieces very much swollen on the basal two-thirds, densely hairy above; no flattened spines on the inner margin near the tip. Clasper placed only a little before tip of sidepieces; broad except for the tip which is suddenly narrowed; terminal spine long, slender, sharp-pointed; there are a few hairs on the broad part of the clasper, but none round the terminal spine.

Stanleyville, 1923 (Dr. MOUCHET); 1 ♂. Type in the Tervueren Museum.

Numerous females of *A. (B.) palpalis* NEWST. were present also in Dr. MOUCHET'S collection. In these the proboscis has at least a few

pale scales on the under side in the middle, sometimes forming a distinct ring, and the hind tibiae have a well-marked yellow spot on the outer side beyond the middle.

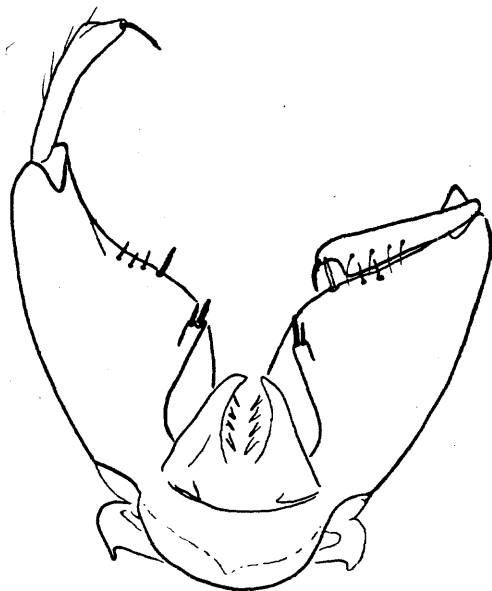


Fig. 2. — Male hypopygium of *Aedes (Banksinella) crassiforceps* sp. n.

3. — ***Culex (Culiciomyia) semibrunneus*** sp. n.

Closely related to *C. nebulosus* THEO., and especially to *C. cinerellus* EDW., differing in the following points : Scales of mesonotum rather larger and browner, the integument also rather browner, so that the thorax has not the frosted appearance of *C. nebulosus*. Pleurae and coxae rather shining, without scales, as in *C. cinerellus*, but pleural membrane not darkened in middle. The outstanding scales of the male palpi are different in form from those of the other species, the last six or eight being club-shaped with rounded tips, without any trace of a terminal point. Hypopygium : Clasper angularly bent, with membranous expansion round the bend, as in *C. nebulosus*. Side-pieces without hair-patch, as in *C. cinerellus*; mesosome also resembling that of *C. cinerellus* in the long fingerlike processes, placed close together; the processes however have a distinct tooth at the base.

Stanleyville, 1923 (Dr. MOUCHET); 6♂ and numerous ♀, cotypes in the British, Brussels and Tervueren Museums.

The African species of the subgenus *Culiciomyia* may be distinguished by the shape of the outstanding scales on the male palpi, as shown in the accompanying figure (fig. 3). Attention should be

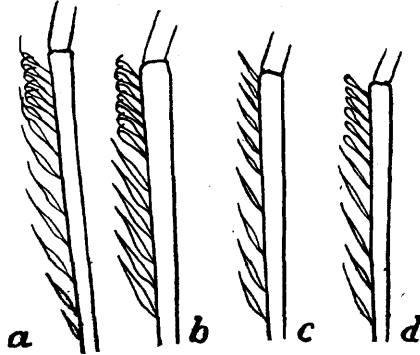


Fig. 3. — Outstanding scales on long segment of male palpi of African species of *Culex*, subgenus *Culiciomyia* (diagrammatic). — a, *C. cinereus* THEO.; — b, *C. nebulosus* THEO.; — c, *C. cinerellus* EDW.; — d, *C. semibrunneus*, sp. n.

especially directed to the shape of the tips of the scales towards the end of the long segment of the palpi; the slender stem of these scales appears to vary in length in all species.

4. — *Culex andreanus* sp. n.

Closely allied to to *C. kingianus* EDW., differing as follows: — Colour darker. Outer side of hind femur largely dark. Sternopleural bristles



Fig. 4. — Tip of side-piece and clasper of male, *Culex andreanus* sp. n.

less numerous and black instead of whitish, the row distinctly interrupted in the middle, whereas in typical *C. kingianus* it is continuous. Lower mesepimeral bristle also black. Bases of fork-cells level. Male palpi longer, exceeding the proboscis by more than the length of the last segment. Hypopygium : Claspers very broad in the middle, outer margin almost angular (fig. 4). Leaf much broader than in *C. kingianus*; rods more slender, two of them bend almost at right angles in the middle, the rest straight. Mesosome less tuberculate, tips not bent. Hairs on ninth tergite more numerous (about 10 instead of about 4 on each lobe).

Irebu, VII, 1924 (Major ANDRÉ); 3♂ 5♀, cotypes in the British and Tervueren Museums.

The females recorded by me from Southern Nigeria and the Gold Coast are perhaps this species rather than *C. kingianus*.
