

1927

Div. Insects
U. S. Nat. Mus.

Nova Guinea.

RÉSULTATS

DE

L'EXPÉDITION SCIENTIFIQUE NÉERLANDAISE À LA
NOUVELLE-GUINÉE

Tirage apart du Vol. XV, Zoologie

(PUBLIÉ DÉCEMBRE 1927).

LEIDE
LIBRAIRIE ET IMPRIMERIE
CI-DEVANT
E. J. BRILL
1927.

NOTES ON THE MOSQUITOES,

COLLECTED BY THE NEW GUINEA EXPEDITION IN 1926,

BY

S. L. ~~BURG~~. Brug'
(Geneeskundig Laboratorium, Weltevreden.)

Through the kindness of the members of the expedition, Dr. W. DOCTERS VAN LEEUWEN, J. W. E. HOFFMANN and H. P. WIRTH, I have had an opportunity to examine the mosquitoes collected by that expedition. The result of this study follows here.

A. ANOPHELINAE.

Nyssorhynchus punctulatus (Dön.) nec Theo.

- Albatrosbivak (WIRTH) ♂ 18 specimens, ♀ 29 specimens.
- Meervlakte (DOCTERS VAN LEEUWEN) ♀ one specimen.
- Bataviabivak (DOCTERS VAN LEEUWEN) ♀ one specimen.
- Motorbivak (HOFFMANN) ♀ 3 specimens.

Among the specimens from Albatrosbivak there is one with bright yellow instead of white scales on the mesonotum.

Nyssorhynchus punctulatus var. *moluccensis* Swell.

- Albatrosbivak (WIRTH) ♀ 7 specimens.
- Motorbivak (HOFFMANN and DOCTERS VAN LEEUWEN) ♀ 16 specimens.
- Meervlakte (DOCTERS VAN LEEUWEN) ♀ one specimen.
- Bataviabivak (DOCTERS VAN LEEUWEN) ♀ one specimen.

Nyssorhynchus punctulatus: transitional forms between typical specimens and the variety *moluccensis*.

In many cases the only character to distinguish these two forms, viz. a white or a dark apical half of the rostrum, did not hold good. All transitional stages between the two forms have been found.

- Albatrosbivak (WIRTH) ♀ one specimen, ♂ 11 specimens.
- Motorbivak (HOFFMANN and DOCTERS VAN LEEUWEN) ♀ 6 specimens.
- Meervlakte (DOCTERS VAN LEEUWEN) ♀ one specimen.
- Van der Willigenriver (DOCTERS VAN LEEUWEN) ♀ 4 specimens.

Nyssorhynchus annulipes Walk.

- Albatrosbivak (WIRTH) ♀ 4 specimens.

B. CULICINAE.

Taeniorhynchus (Mansonioides) papuensis Taylor.

Meervlakte (DOCTERS VAN LEEUWEN) ♀ one specimen.

Van der Willigenriver (DOCTERS VAN LEEUWEN) ♀ 3 specimens.

Taeniorhynchus (Mansonioides) uniformis Theo.

Meervlakte (DOCTERS VAN LEEUWEN) ♀ one specimen.

Bataviabivak (DOCTERS VAN LEEUWEN) ♀ 2 specimens.

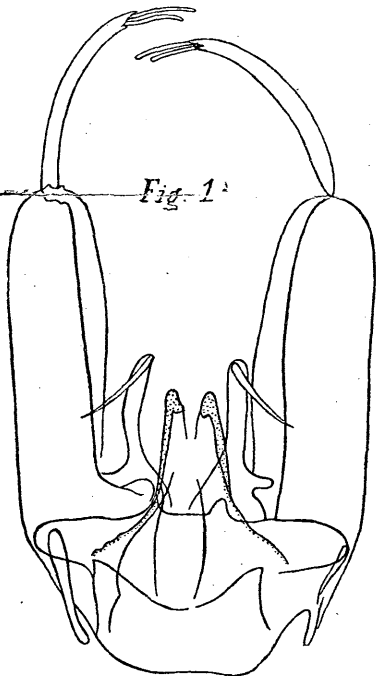
Van der Willigenriver (DOCTERS VAN LEEUWEN) ♀ 8 specimens.

In some specimens from the lastnamed locality the median light greenish stripe is not, as usually, restricted to the posterior half of the mesonotum, but is continued on its whole length.

Aedes (Finlaya) papuensis (Taylor).

Albatrosbivak (WIRTH) ♂ 2 specimens, ♀ 2 specimens.

The male of this species was not yet known. The palpi are almost as long as the rostrum, the subapical segment and the extremity of the preceding one are strongly hairy; the apical segment less so. Squamation darkbrown with three white bands: on the bases of the two apical segments and in the middle of the long segment; two spines on the subapical one; the two last segments are somewhat recumbent (as in *Aedes vexans*). Hair covering of the antennae goldenbrown. Abdomen with white basal bands on the tergites II=IV, tergite III totally white. The most striking feature of the external genitalia is the presence of two spines on the forceps. (see fig. 1)

*Aedes (Aedes) similis* (Theo.).

Motorbivak (HOFFMANN and DOCTERS VAN LEEUWEN) ♀ 10 specimens.

Meervlakte (DOCTERS VAN LEEUWEN) ♀ one specimen.

Van der Willigenriver (DOCTERS VAN LEEUWEN) ♀ 9 specimens.

Aedes (Aedes) carmentis Edwards.

Van der Willigenriver (DOCTERS VAN LEEUWEN) ♀ 2 specimens.

Lutzia halifaxii (Theo.)

Albatrosbivak (WIRTH) ♂ 6 specimens, ♀ 6 specimens.

Culex (Culiciomya) muticus Edwards.

Albatrosbivak (WIRTH) ♂ 2 specimens, ♀ 3 specimens.

Culex (Culex) annulirostris Skuse.

Albatrosbivak (WIRTH) ♂ 2 specimens, ♀ 4 specimens.

Culex (Culex) sitiens. Wied.

Albatrosbivak (WIRTH) ♂ one specimen, ♀ one specimen.

Culex sp.

Van der Willigenriver (DOCTERS VAN LEEUWEN) ♀ one specimen.

"Perhaps representing a new species near *C. vishnui*, but not sufficiently well-characterised to describe in the absence of the male" (EDWARDS).

Rachionotomyia bimaculipes (Theo.).

Upper Rouffaerriver (DOCTERS VAN LEEUWEN), about 400 M. and Boschbivak ♀ 5 specimens.

Rachionotomyia vanleeuweni Edw.

Upper Rouffaerriver, about 400 M (DOCTERS VAN LEEUWEN) ♀ 4 specimens.

Rachionotomyia brugi Edw.

Upper Rouffaerriver, about 700 M, Explorateursbivak (DOCTERS VAN LEEUWEN) ♀ 10 specimens.

Rachionotomyia latisquama Edw.

Nassau mountains, about 1500 M, virginal forest (DOCTERS VAN LEEUWEN) ♀ one specimen.

Rachionotomyia microlepis Edw.

Nassau mountains, about 1500 M, virginal forest (DOCTERS VAN LEEUWEN) ♀ one specimen.

Rachionotomyia subnudipennis Edw.

Nassau mountains, about 2400 M, mosswood (DOCTERS VAN LEEUWEN), ♀ one specimen.

The last five species have been described by EDWARDS in this volume. The captures of DOCTERS VAN LEEUWEN in the hills and on the Nassau mountains are very remarkable. In all 27 mosquitoes were caught, 24 of which belong to the genus *Rachionotomyia*. In all other collections, which have been sent to me, a *Rachionotomyia* is of rare occurrence, at least if the specimens captured are imagines. Among more than 11,000 mosquitoes, sent to me from time to time from the most different spots of the Indo-Australian archipelago, there are 38 imagines of *Rachionotomyia*, 24 of which have been collected by DOCTERS VAN LEEUWEN, 5 come from Dr. KALTHOFEN, who collected on the Upper-Digul, whereas the remaining 9 came in one or two specimens from different islands. A second remarkable fact in relation to the specimens of *Rachionotomyia* collected by DOCTERS VAN LEEUWEN is, that they belong to six different species, five of which are new.

Armigeres lacuum Edw.

Albatrosbivak (WIRTH) ♀ 16 specimens, ♂ 6 specimens.

Upper Rouffaerriver, about 400 M (DOCTERS VAN LEEUWEN) ♀ one specimen.

Explorateursbivak, about 700 M (DOCTERS VAN LEEUWEN) ♀ 2 specimens.

In some points these specimens differ from the original description of EDWARDS. They show: no white scales on the vertex, no white scales on the clypeus, a proboscis, which has the same length as the anterior femora, no white border, but only a few scattered white scales on the mesonotum. The squamation of the scutellum totally dark, eighth abdominal tergite totally white; the outer side of the tip of the posterior femur dark. The genitalia of the males however are quite in accordance with the description of EDWARDS. A couple of specimens, sent to this author, have been identified by him as *A. lacuum*.